

Project Meylandtlaan Heusden-Zolder

APPARTEMENT 2.2

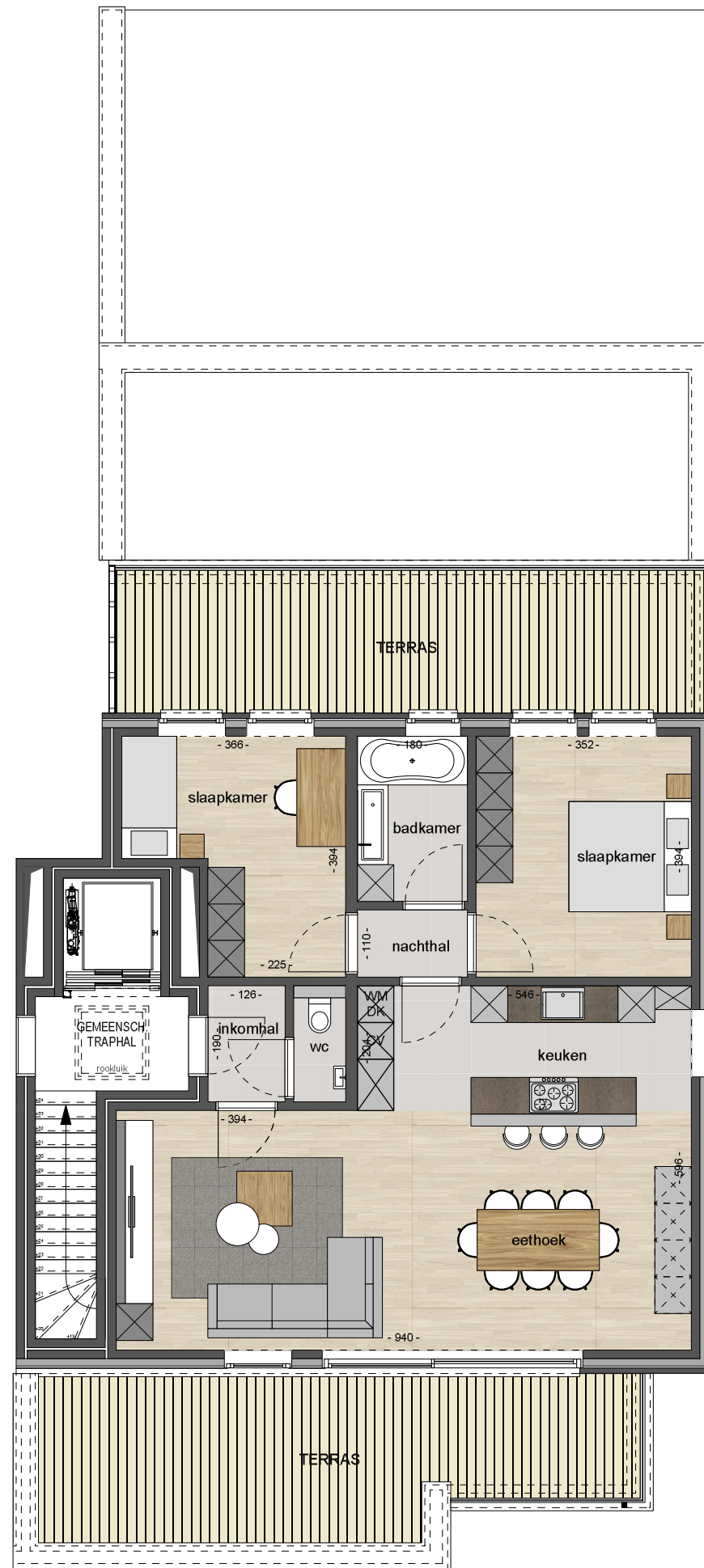
nivo : +2

opp. : appartement : 88,02m²

terras : 47,56m²

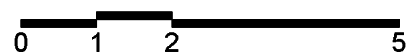
(bruto inwendige oppervlakte)

- maatvoering richtinggevend
- inrichting indicatief
- keuken en sanitair layout
conform verkoopslastenboek

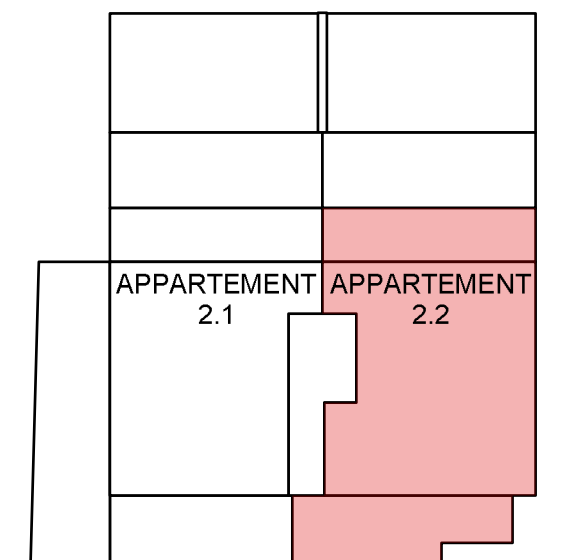
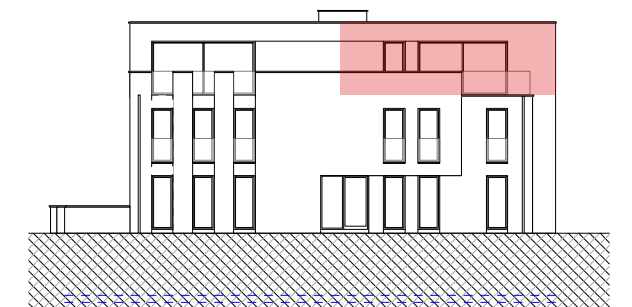


PLAN VERDIEPING 2

schaal 1/100



SITUERING



ORIËNTATIE

OVERZICHT

