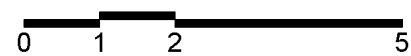


**PLAN GELIJKVLOERS**  
 schaal 1/100



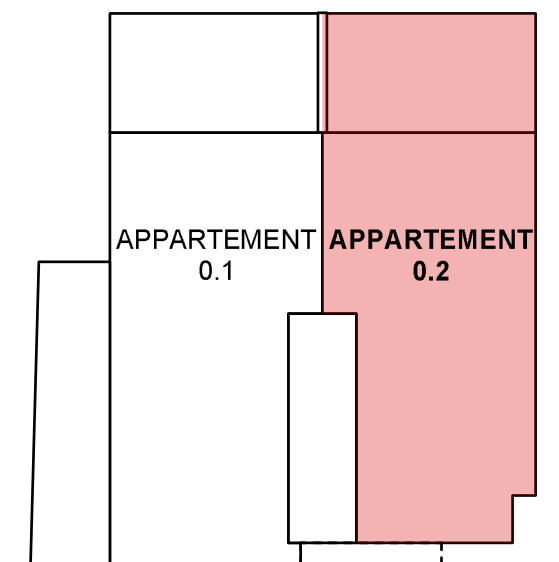
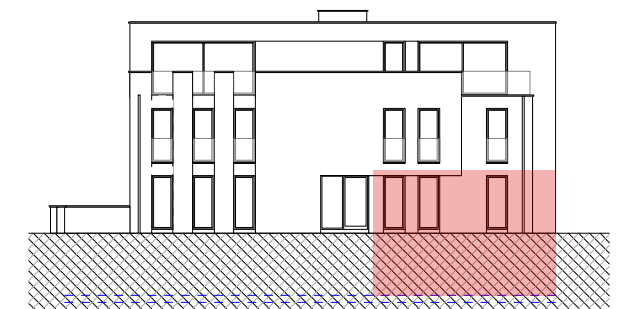
# Project Meylandtlaan Heusden-Zolder

## APPARTEMENT 0.2

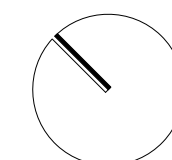
nivo : +0  
 opp. : appartement : 110,06m<sup>2</sup>  
           kantoorruimte : 41,23 + 19,46m<sup>2</sup>  
           terras : 53,29  
 (bruto inwendige oppervlakte)

- maatvoering richtinggevend
- inrichting indicatief
- keuken en sanitair layout conform verkoopslastenboek

### SITUERING



### ORIËNTATIE



### OVERZICHT