

Project Meylandtlaan Heusden-Zolder

APPARTEMENT 2.1

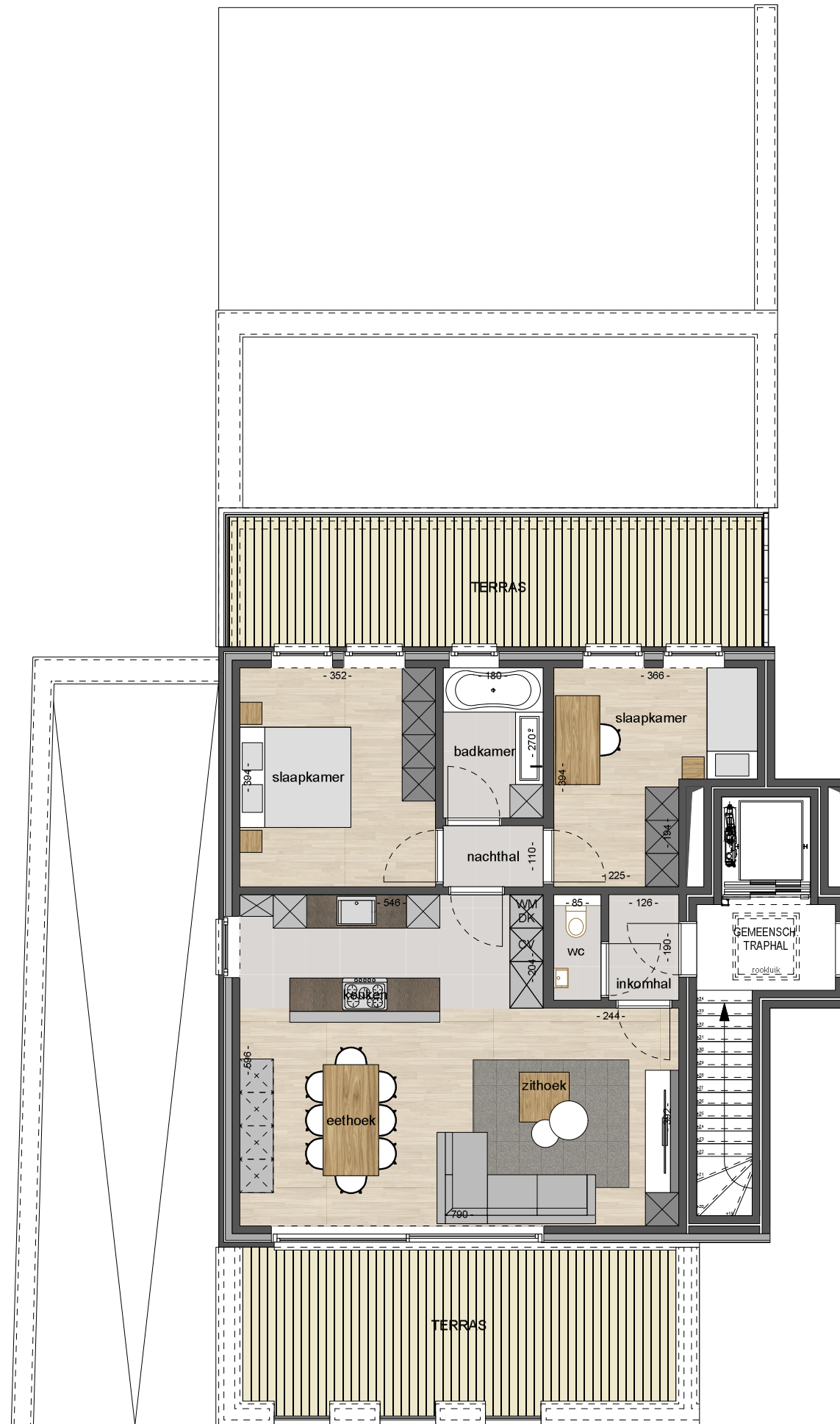
nivo : +2

opp. : appartement : 82,14m²

terras : 45,50m²

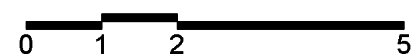
(bruto inwendige oppervlakte)

- maatvoering richtinggevend
- inrichting indicatief
- keuken en sanitair layout conform verkoopslastenboek

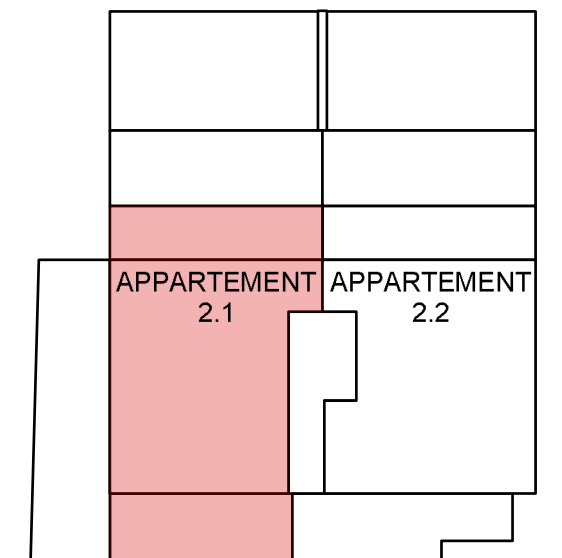
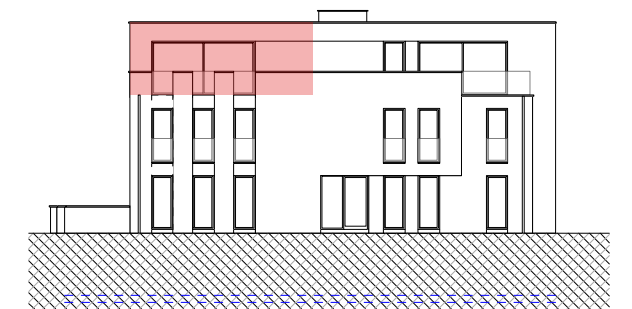


PLAN VERDIEPING 2

schaal 1/100



SITUERING



ORIËNTATIE

OVERZICHT

