

Project Meylandtlaan Heusden-Zolder

APPARTEMENT 0.1

nivo : +0

opp. : appartement : 121,53m²

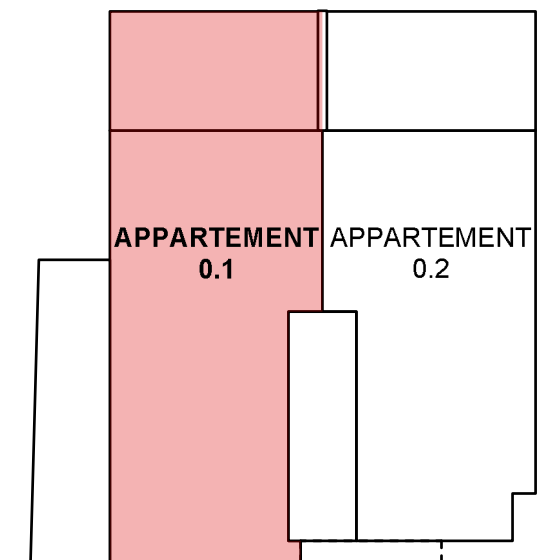
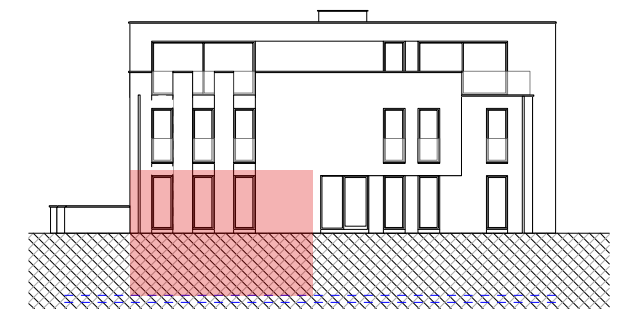
kantoorruimte : 40,38 + 27,19m²

terras : 53,29m²

(bruto inwendige oppervlakte)

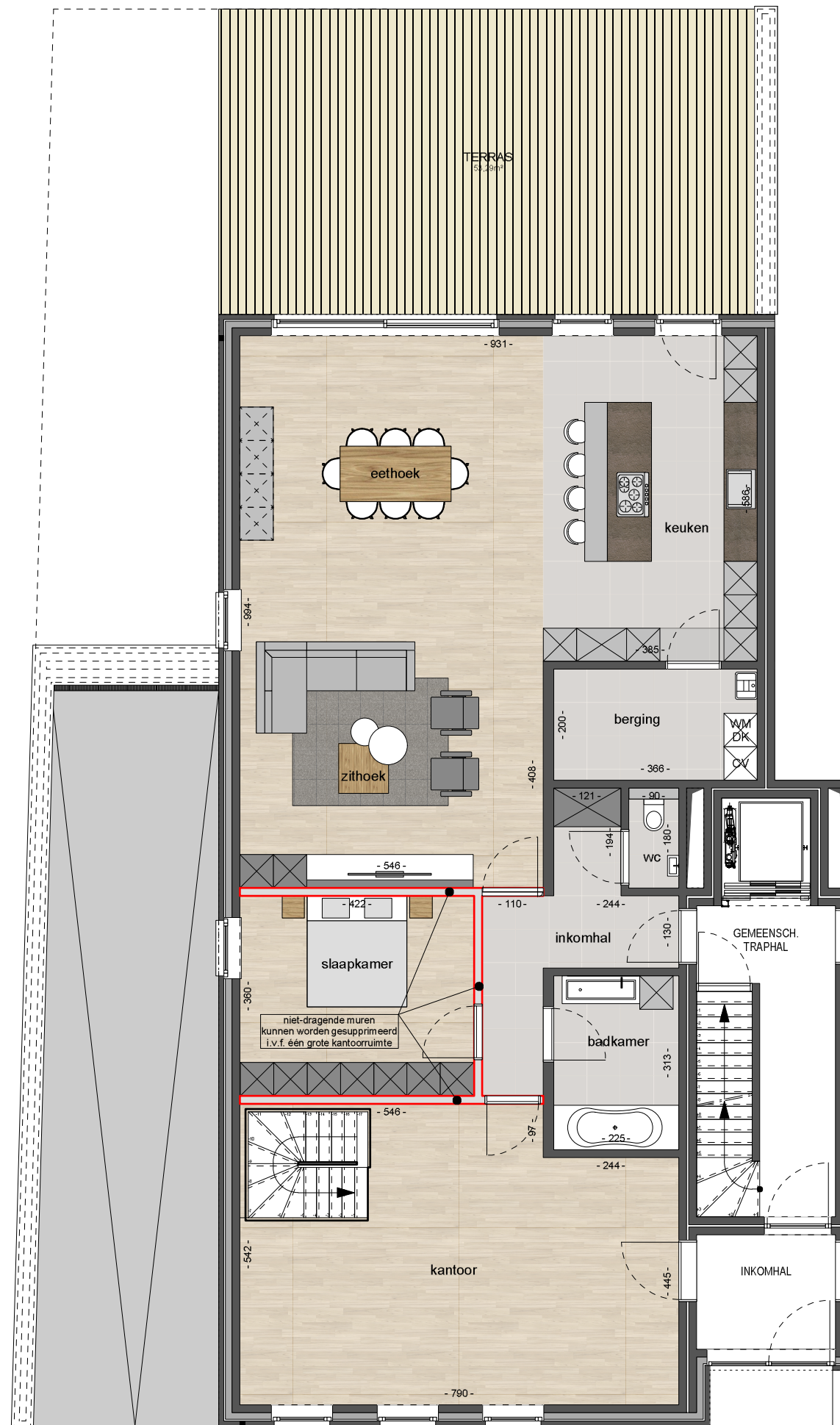
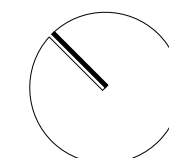
- maatvoering richtinggevend
- inrichting indicatief
- keuken en sanitair layout conform verkoopslastenboek

SITUERING



ORIËNTATIE

OVERZICHT



PLAN GELIJKVLOERS

schaal 1/100

